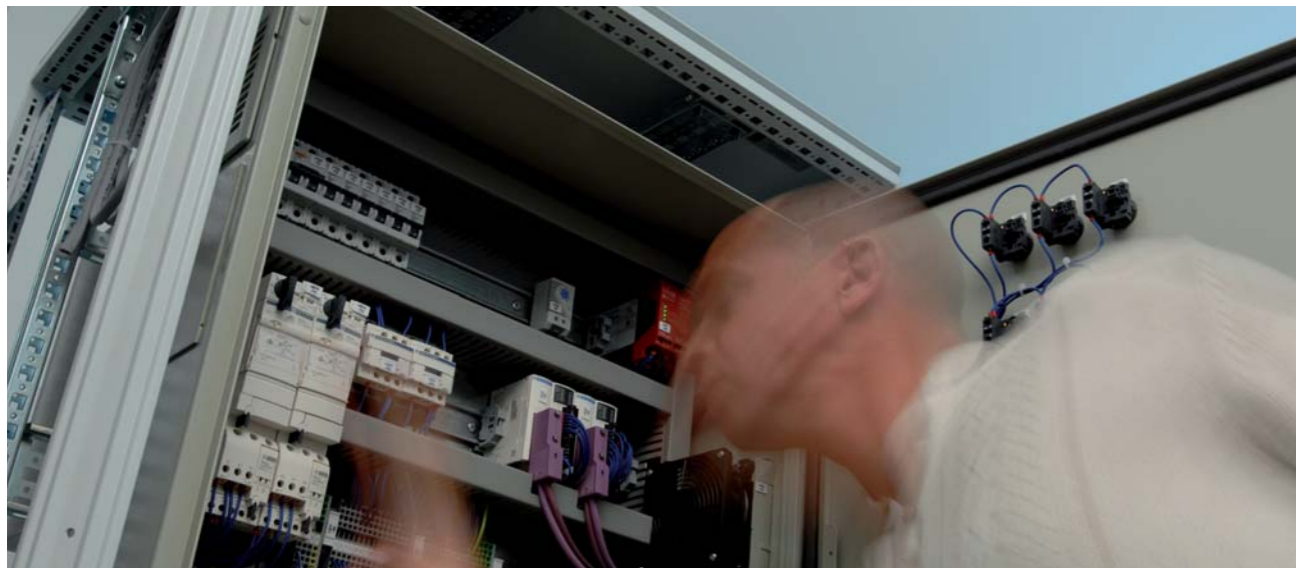


Electrical Standards

Conceive, design & assemble a machine control panel according to UL508A requirements.



Your Challenges?

- > Address new business opportunities in UL influenced markets
- > Adapt existing control panel design to meet most recent UL508A requirements
- > Subcontract control panel assembly to UL certified partners

What do we offer?

Benefit from the hands-on experience of Schneider Electric experts to design and assemble state of the art UL control panels. This is a multiple entry program depending on your situation:

- > **UL Discovery:**
An insight into the UL world for decision makers. Get to know the essential requirements
- > **UL in depth:** a 2 day training course dedicated to electrical engineers to be able to master the concepts of UL508A standards
- > **UL in practice:**
 - Get access to Schneider Electric expertise to review together your electrical schemes
 - Get access to UL experienced panelbuilders



How does this work?

- > Attend information seminar to get updated on the subject
- > Get Schneider Electric experts to train your engineering team
- > Get personalized consulting on your own drawings
- > Identify options for sub-contracting panel assembly

Whatever your level of mastery on the subject is, Schneider Electric is at your side in the field of global competition

Your experience and ambition



Schneider Electric
Products & solutions

What are the benefits for you as an OEM?

Minimize time to UL market:

- > Capture new market opportunities
- > UL machine acceptance process made easier
- > Keep abreast of the latest UL evolutions



www.oem.schneider-electric.com

Schneider Electric Industries SAS

Head Office
89, bd Franklin Roosevelt
92506 Rueil-Malmaison
Cedex France

www.schneider-electric.com

Owing to changes in standards and equipment, the characteristics given in the text and images in this document are not binding until they have been confirmed with us.
Print: Schneider Electric
Design: BlueLoft
Photos: Schneider Electric